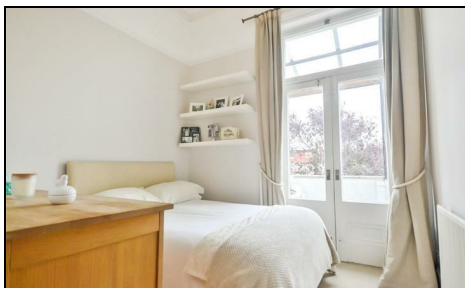
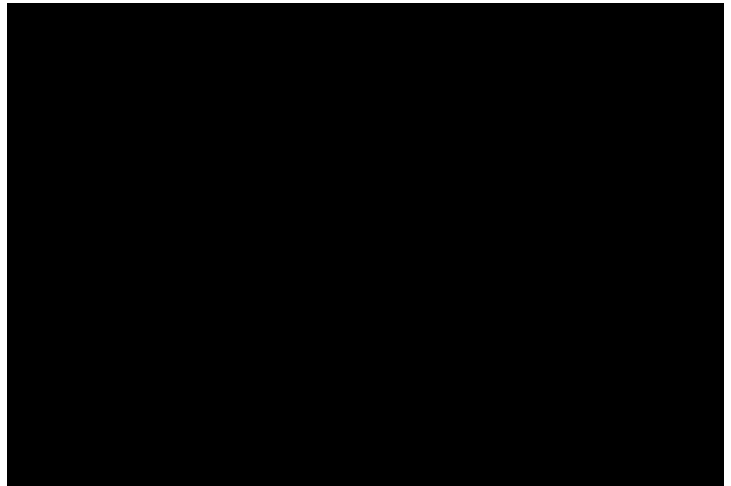


**Worple Road
Wimbledon, SW20 8PR**

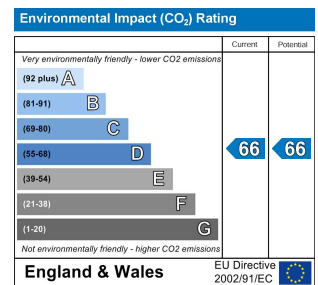
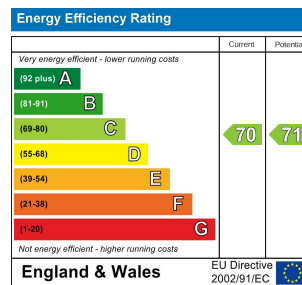
£1,500 Per Month



A delightful & charming raised ground floor ONE BEDROOM apartment, located 0.5 miles from RAYNES PARK STATION and 0.9 miles from WIMBLEDON STATION. ELEGANT lounge with FEATURE fireplace and high ceilings, PRIVATE BALCONY which leads out from the living room or your bedroom and down to a BEAUTIFUL SHARED GARDEN. Fully fitted kitchen, storage cupboard in hallway. One double bedroom, bathroom with shower over the bath, separate WC.
EPC C, COUNCIL TAX BAND C



- One Double Bedroom
- Period Property
- Private Balcony
- Excellent Transport Links
- Ground Floor Apartment
- Holding deposit = One weeks rent
- One months rent in advance
- Five week security deposit
- EPC - C
- Council tax band - C



Although these particulars are believed to be correct, their accuracy is not guaranteed and they do not form part of any contract.

Celebrating 30 years of successful Sales and Lettings in Merton

